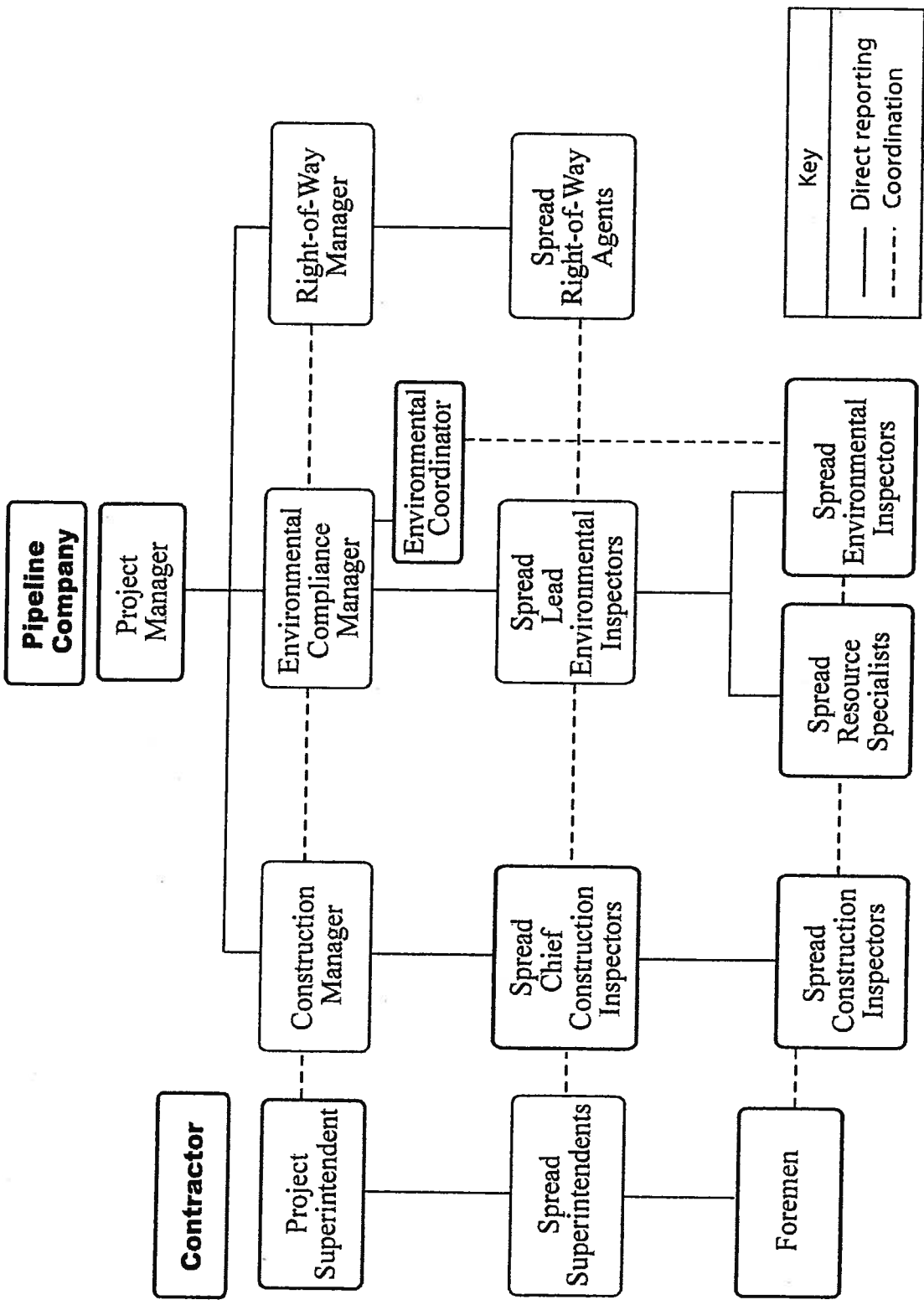


1.0



Key	
—	Direct reporting
- - - - -	Coordination

Project Organization

Contact List

Project Manager:

Dan Noack, Pine Prairie Energy Center, LLC
333 Clay St., Suite 1100
Houston, TX 77002
(713) 646-4462 (office)
(713) 256-8052 (cell)

Project Site Address:

1680 Ambrose Road
Ville Platte, LA 70586

Construction / Site Operations Manager:

Bobby Haney, Pine Prairie Energy Center, LLC
(713) 652-3673
(713) 854-5466 (cell)
bhaney@paalp.com

Contractor Project Superintendent / Environmental Coordinator / Spill Coordinator:

Hugh Sanderson, TK Stanley
(601) 319-6137

Operations Facility Manager:

Donald Fontenot, Pine Prairie Energy Center, LLC
(337) 599-2196, x 23403 (office)
(337) 344-5688 (cell)

Environmental and Regulatory Compliance Director:

Warren Fusilier, Pine Prairie Energy Center, LLC
(713) 646-4515 (office)
(713) 201-3911 (cell)
wdfusilier@paalp.com

Environmental Inspector:

Eric Bolin, SWCA Environmental Consultants
(281) 660-2772 (project cell)
(832) 386-5650 (personal cell)
ebolin@swca.com
ce.EJBolin@paalp.com

Back-up Environmental Inspector:

Neil Crouch, SWCA Environmental Consultants
(281) 660-2772 (project cell)
ncrouch@swca.com